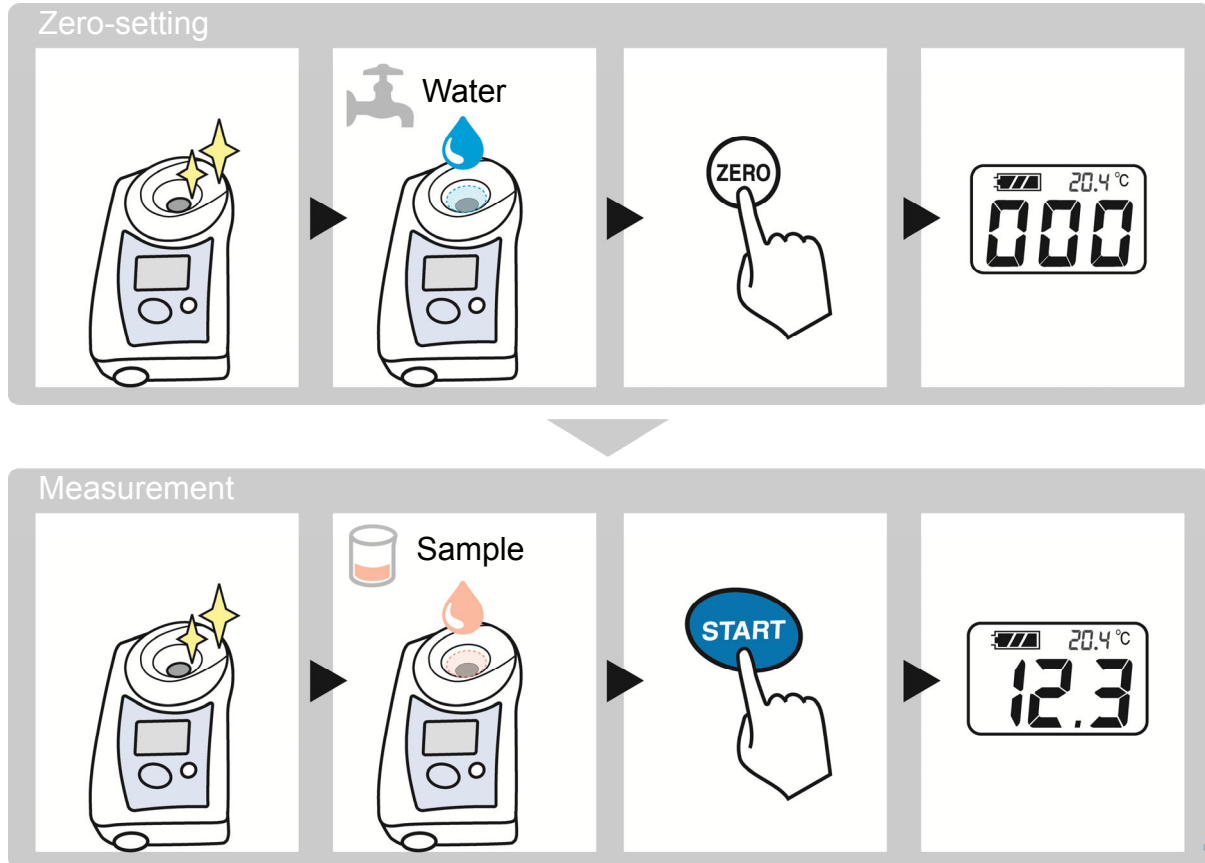


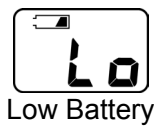


PAL Refractometer

How to Use



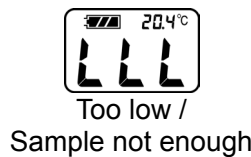
Error Messages



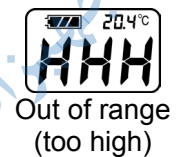
Low Battery



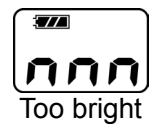
Zero Set Fault



Too low /
Sample not enough



Out of range
(too high)



Too bright



Temp. error
(too low)



Temp. error
(too high)



Malfunction

Attention

*Thoroughly wash and dry after use.

*Clean oily residues with alcohol or soap.